

# RANGE 14

## SOP

### RANGE DESCRIPTION

Range 14 is an active Squad in the offense Fire and Movement range located at Grid 87907310. It is accessible from MCB 1.

Primary Use: Multi-purpose small arms range for squad sized units in the offensive conducting Fire and Movement, buddy pair, and squad rushes engaging targets to the direct front only. There are multiple firing points/lanes on Range 14 with (55) Stationary Infantry Targets (SITs) and (16) Mobile Infantry Targets (MITs). There are (6) distinct lanes or "Operating Boxes" (Op-box) for the Trackless Mobile Infantry Targets (TMITs) available to augment the MITs and SITs in the movement box; these targets must be engaged to the direct front only. Additionally, TMITs have a Cross-Fire Op-Box down range beyond the Limit of Advance (LOA) that can be engaged from anywhere along the LOA to any TMIT in the Cross-Fire Op-Box. See Figures 4 and 5.

Alternate Uses: Multipurpose Machine Gun Range. Max Firing Distance: 610M

### RANGE 14



Figure-1



RANGE 14 MOVEMENT BOX DEFINED



Figure-2

**Movement Box:**

- The grid coordinates above show the four corners of the Movement Box.
- Movement Box measures 108m wide and 350m deep.
- There are 6 lanes at 18m wide depicted here for reference.
- These reference lanes are also the TMIT Op-Boxes shown in Figure-4.
- All Concept of Operations (ConOps) and Schemes of Maneuver (SOM) must stay in this movement box.
- Personnel are not authorized to make movement beyond the LOA.
- The LOA also serves as the firing line for the TMIT Cross-Fire Op-Box shown in Figure 5.



**WEAPONS ACCOMMODATED:** Detailed list is maintained in the Range Facility Management Support System (RFMSS).

- Service Rifle
- Pistol
- Shotgun
- Hand held grenade launcher
- Grenades (Practice/Illum)
- SMAW/AT-4/M72 LAAW Trainers
- Light and Medium Machine Guns
- Approved Foreign Weapons

**AMMUNITION AUTHORIZED:** Detailed list is maintained in the Range Facility Management Support System (RFMSS).

- 5.56mm (All)
- Pistol (All)
- Shotgun (All)
- 7.62mm Ball/Link
- SMAW 9mm
- 40mm Illum/Practice
- AT-4 9mm
- Grenade Illum/Practice
- M72 LAAW Trainer
- Approved Foreign Ammunition

**TARGETS/SIMULATORS/DEVICES:**

- This range has 71 automated targets that must be requested for use under "R-14 Support Services" in the Training Systems Support Desk (TSSD) when the range is requested in RFMSS.
- Multiple lanes consisting of (55) SITS and (16) MITs protected by SACON concrete bunkers. These targets are battery-operated and Contractor controlled. Maximum range 610m.
- Trackless Mobile Infantry Targets (TMITs) are approved on this range and must be coordinated through the TSSD.
- (6) distinct lanes or "Operating Boxes" (Op-box) for the TMITs that augment the MITs and SITS in the main movement box. See Figures 4 and 5.
- TMITs will operate in the designated areas depicted in Figure 4 and Figure 5 only.
- Additional targets are limited to paper, wood, plastic and approved ballistic steel reactive targets (SRT).
- OIC/RSO must ensure all additional targets are placed and engaged to the direct front of the shooter so that all gun-target lines stay within lateral limit markers of this range.
- Cross-fire is not authorized from anywhere in the movement box between the Main Firing Line and the LOA.
- Steel reactive targets (SRTs) must be a minimum of 3/8" and constructed of AR-500 or greater steel.
- SRTs will not be placed within 20' to the side or 20' behind target bunkers as shown in Figure-3.
- EPR ammunition (M855A1/M80A1) is NOT authorized to be fired on SRTs, TMITs, or steel protective plates for Portable Infantry Targets (PITS).**

-Contact Training Support Center (TSC) at (703)432-7026/7969 for target support or questions.

**Minimum engagement distances for SRTs:**

- Pistol (non-magnum): 7 meters
- Shotgun (buck/bird): 10 meters
- Shotgun (slug): 50 meters
- 5.56mm/.223 Ball/link: 150 meters for TSC targets  
100 meters for unit-owned targets
- 7.62mm Ball/linked: 150 meters for TSC targets  
100 meters for unit-owned targets
- 7.62mm Special Ball: 150 meters
- .300 WinMag Ball: 300 meters
- .338 LaPua Magnum: 300 meters

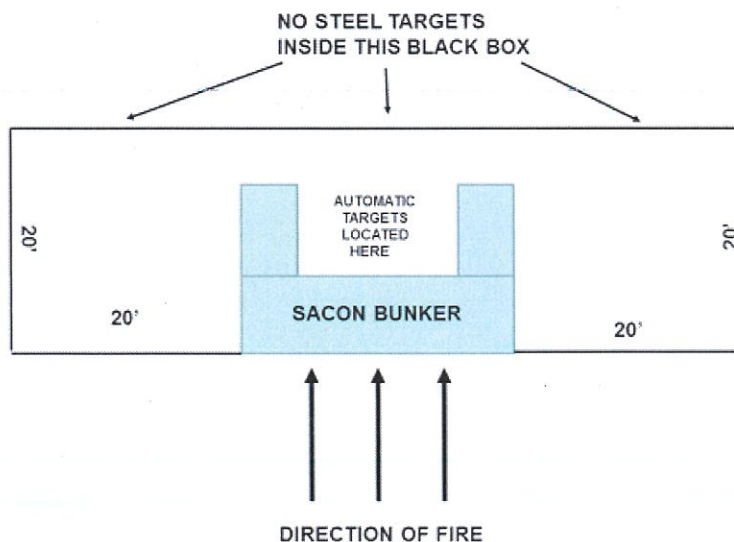
**-Approved foreign weapons ammunition**

- Pistol (non-magnum): 7 meters
- 5.45mm: 150 meters for TSC targets  
100 meters for unit-owned targets
- 7.62mm Ball and linked: 150 meters for TSC targets  
100 meters for unit-owned targets
- 7.62mm x 54R: 150 meters for TSC targets  
100 meters for unit-owned targets

**Minimum engagement distance for Trackless Mobile Infantry Targets (TMITS):**

- .300 WinMag: 300 meters
- 7.62mm: 150 meters
- 5.56mm (steel penetrator): 69 meters
- 5.56mm (soft core): 23 meters
- Pistol calibers (non-magnum): NOT AUTHORIZED. GEOMETRY OF GUN-TARGET LINES WILL EXCEED THE LIMITS OF THIS RANGE AND EXIT THE INSTALLATION.

**Placement of SRTs around SITs and MITs**



**Figure-3**



# Trackless Mobile Infantry Target (TMIT) Operating Box (Lanes 1-6)

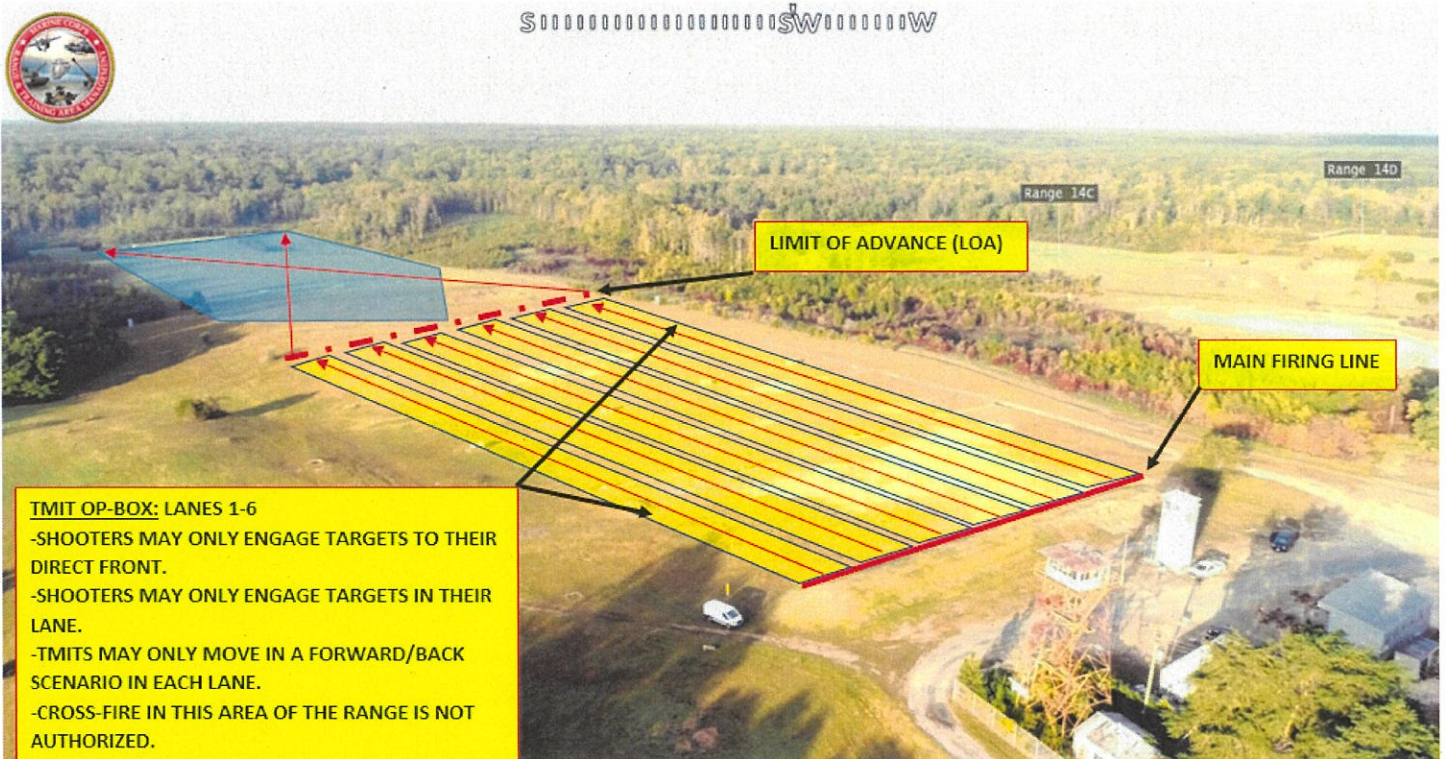


Figure-4

# Trackless Mobile Infantry Target (TMIT) Cross-Fire Operating Box

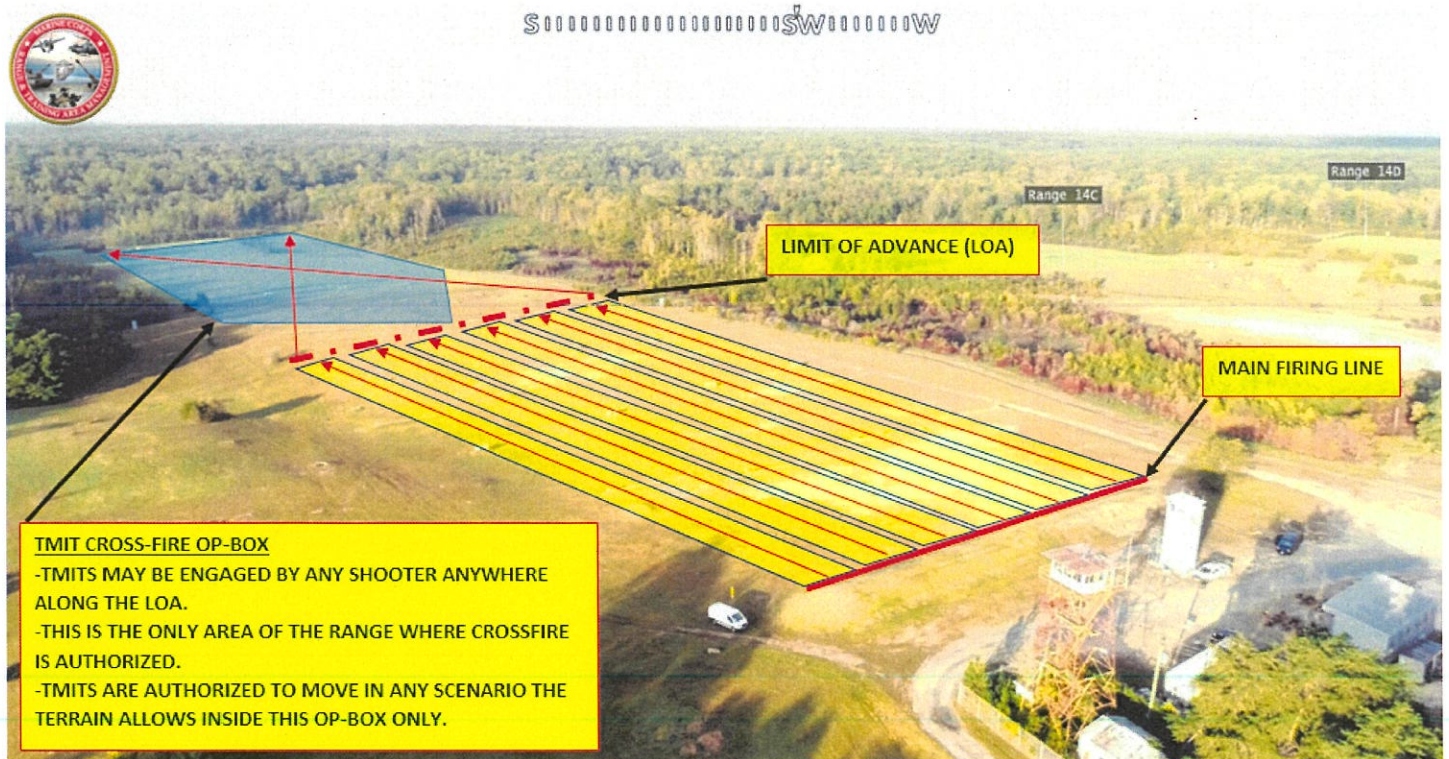


Figure-5



PRIMARY DIRECTION OF FIRE. Southwest

RANGE USE RESTRICTIONS/COMMENTS

1. Cross-fire is not authorized from anywhere in the movement box between the Main Firing Line and the LOA as shown in Figure-2.
2. Cross-fire is authorized from the LOA into the TMIT Op-Box shown in Figure-5 ONLY.
3. Only weapons and ammunition listed in this document will be used on this range. Detailed lists are maintained in RFMSS.
4. OIC and RSO must be present while live fire is in progress.
5. All brass, trash, targetry and materials will be removed completely at the end of training by the using unit. This includes any materials used to place targets on.
6. Ensure range flags are posted, ear protection is worn (eye protection for SRTs and TMITs), safety brief is given, Range Control contacted and all fires are directed between the left and right lateral limits markers (black and white striped).
7. Targets are limited to wood, paper, plastic, approved SRTs, and TMITs. No other targets will be used such as bowling pins, clay targets, etc.
8. **SRTs will not be engaged closer than 100 meters with 5.56mm or 7.62mm.**
9. Limited fire and maneuver is authorized. One to two gun support-by-fire (SBF) position is located just to the left of the main firing line. Fire and movement (rushes) is authorized from the main firing line oriented straight down range. SBF must cease fire when movement rushes begin.
10. Units that do not occupy their range within two hours of their scheduled occupy time will lose the use of that range for that day.
11. Units that have requested contractor support (automated targets, PITS targets, battlefield effects simulators, etc.) are required to contact a Government representative (TECOM Systems Support Officer (SSO) or Fire Desk) if the unit will not be present on the specified range within 1 hour of the approved time in RFMSS.
12. Units that have occupied a range with approved contractor support (automated targets, PITS targets, battlefield effects simulators, etc.) and that have not begun to use that support within 2 hours of the approved time in RFMSS will forfeit all contracted support for the day.
13. Units that are training with contractor support (automated targets, PITS targets, battlefield effects simulators, etc.) that place themselves

into a voluntary check fire for 2 hours or more during the approved support hours will forfeit remaining support for the day.

NOTE: Units that encounter situations where contractor support (automated targets, PITS targets, battlefield effects simulators, etc.) is delayed or interrupted by circumstances beyond the control of the requesting unit (RMB directed check fire, ASP support, MEDEVAC, etc.) must contact a Government representative (SSO or Fire Desk) in order to arrange continued support within the scope of the contract and available assets.

14. If battle effect simulators are to be used on this range, qualified personnel trained on the systems must be present.

**APPLICABLE MAP SHEET.** All grid coordinates listed in this order apply to the Quantico Military Installation Map V834S Edition 5-NGA 1:25,000

**FACILITIES**

Towers: 1  
Sheds: 1  
Ammo Breakdown: 1  
Parking: Yes  
Description of Other Structures: (1) Covered bleachers and (1) battery charging station

**UTILITIES AVAILABLE**

Electricity: Yes  
Lights: Yes  
Water System: None

**INSTALLED COMMUNICATIONS.** None

**MEASURED DISTANCES**

	<u>MILES</u>	<u>MGRS</u>
Range Control	8.0	87406360
TBS	7.5	87106390
WTBN	4.5	87806740
ASP	6.0	91256605
EMT/Fire (Fire House 3)	4.5	89606710
Mainside Gate	8.0	94406440
Camp Upshur	5.5	80007850
Nearest MEDEVAC LZ	0.0	88207310 (LZ Oriole)

**Directions to MEDEVAC LZ:** MEDEVAC LZ is located 50 meters to the left of Range 14.

**LASERS AUTHORIZED.** Class 1 - 3R. Standard aiming devices mounted on approved service rifles. Class 3B can be fired if safety filter is on, reducing power output.

<u>Unit Type</u>	<u>Unit Size</u>	<u>Number of Units</u>
Combat Arms	Squad	1

## GEOGRAPHICAL DATA

Access Routes: MCB 1  
Soil Type: Dirt  
Terrain Type: Small rolling hills  
Vegetation: Grass/Woodland

## COMMUNICATION REQUIREMENTS:

1. A radio check is required immediately upon occupying any portion of the RTA, every 30 minutes in a live fire status and every 3 hours in a non-live fire status.
2. The Range Control-Facility (RCF) Fire Desk call sign is "Range Control". Your call sign is "**RANGE 14**".
3. The primary RCF Fire Desk frequencies are: ELMR talk group "RC Safety" (ground) and 323.7 AM UHF (air).
4. The secondary RCF Fire Desk Contact is telephone at: 703-784-5321 or 5322.
5. OIC/RSO will monitor the RCF primary and secondary Safety Nets at all times. Instant communication is required.
6. Any unit with organic ELMR radios will have their ELMR radios programmed with the "RC Safety" talk group and use those radios as their primary means of communication within the RTA and must keep that radio on the RC SAFETY Net.
7. Units without organic ELMR assets will be issued ELMR radios from RMB upon check-out.
8. Approved Non-ELMR radios are only authorized for internal communication (ground).
9. If the RCF cannot reach a unit within the RTA via primary communication, the unit will be contacted via the secondary means of communication.
10. Upon loss of primary communication the OIC/RSO will initiate a "check fire"/cease training status and will contact the RCF via secondary communication. This communication will be maintained while primary communication is being restored. Units may only resume firing/training once primary communication has been re-established and clearance is granted by the RCF.




**INJURY CLASSIFICATIONS:**

Injuries are classified into the following categories in order to aid in casualty evacuation from the RTA.

1. ROUTINE. Routine injuries are those injuries that are not threatening to life, limb or eyesight; and conditions or illnesses treatable by medication or procedures available at the base medical facilities.
2. PRIORITY. Priority injuries are those injuries that require immediate medical attention but are not threatening to life, limb, or eyesight if treated promptly.
3. URGENT. Urgent injuries are severe injuries that are threatening to life, limb, or eyesight and require immediate medical attention.
4. MASS CASUALTY. A mass casualty is a series of injuries with multiple priority and urgent medical patients.

**MEDICAL EVACUATION (MEDEVAC) PROCEDURES:**

1. Injury occurs.
2. Range immediately cease-fires.
3. Medical support evaluates/treats injured personnel.
4. Range OIC/RSO notifies the RCF of the injury, is the victim conscious/unconscious and what type of MEDEVAC transportation is requested (ground/air).
5. The OIC/RSO must maintain constant radio contact with Range Control and awaits further instructions.



**INSTALLATION RANGE SAFETY OFFICER**

**DATE: 18 July 2022**